





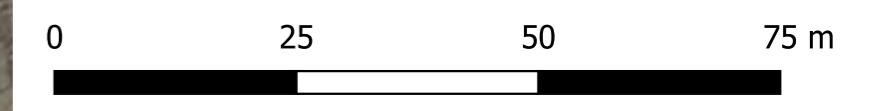
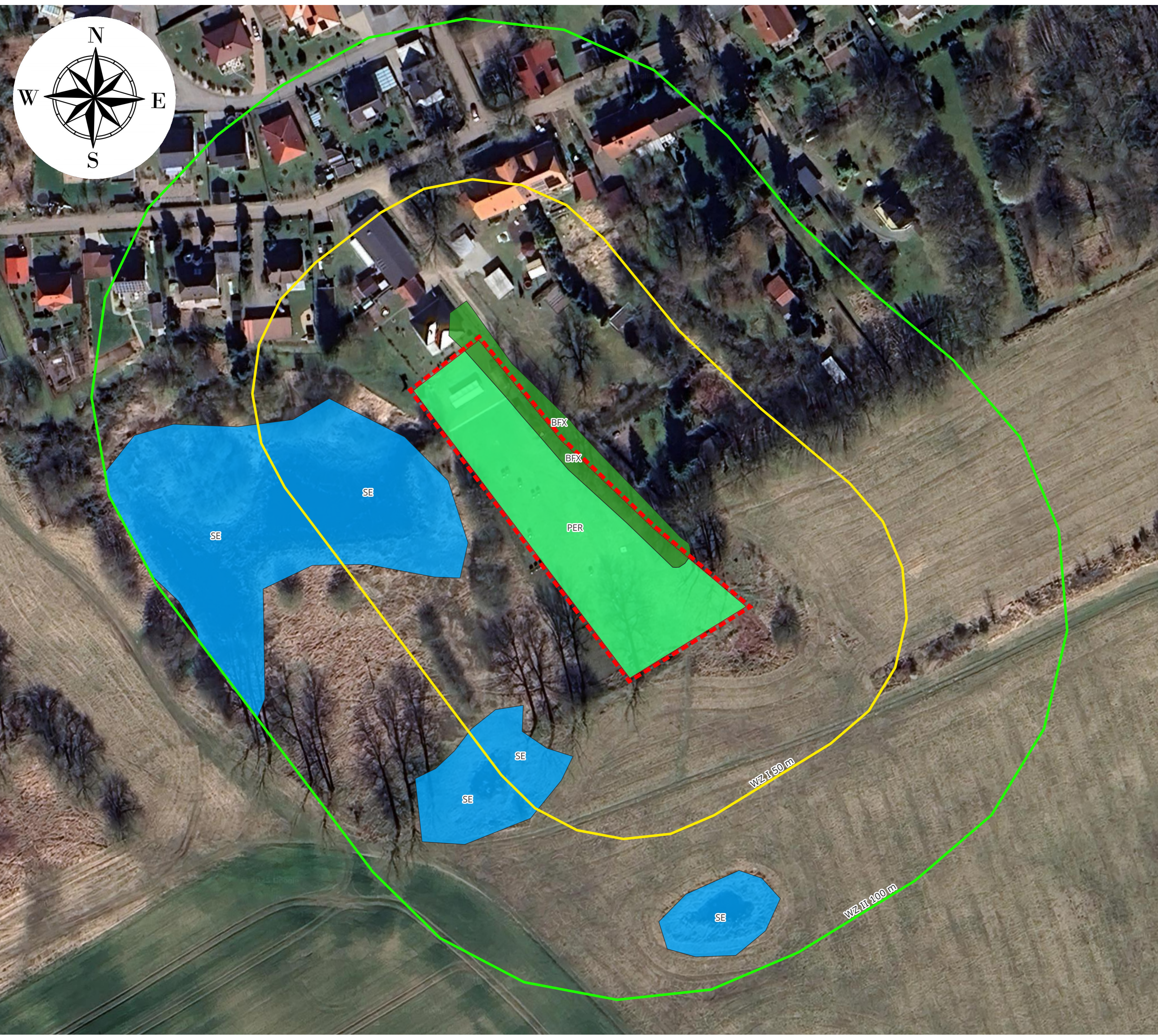




Legende

-  Geltungsbereich
-  Wirkzone I nach HzE MV
-  Wirkzone II nach HzE MV
- Biotope**
-  SE Nährstoffreiche Stillgewässer
-  BFX Feldgehölz aus überwiegend heimischen Baumarten
-  PER Artenarmer Zierrasen



Biotoptypenkartierung

Bebauungsplan Nr. 15 "Bogensportplatz
Diedrichshagen" der Gemeinde Weitenhagen